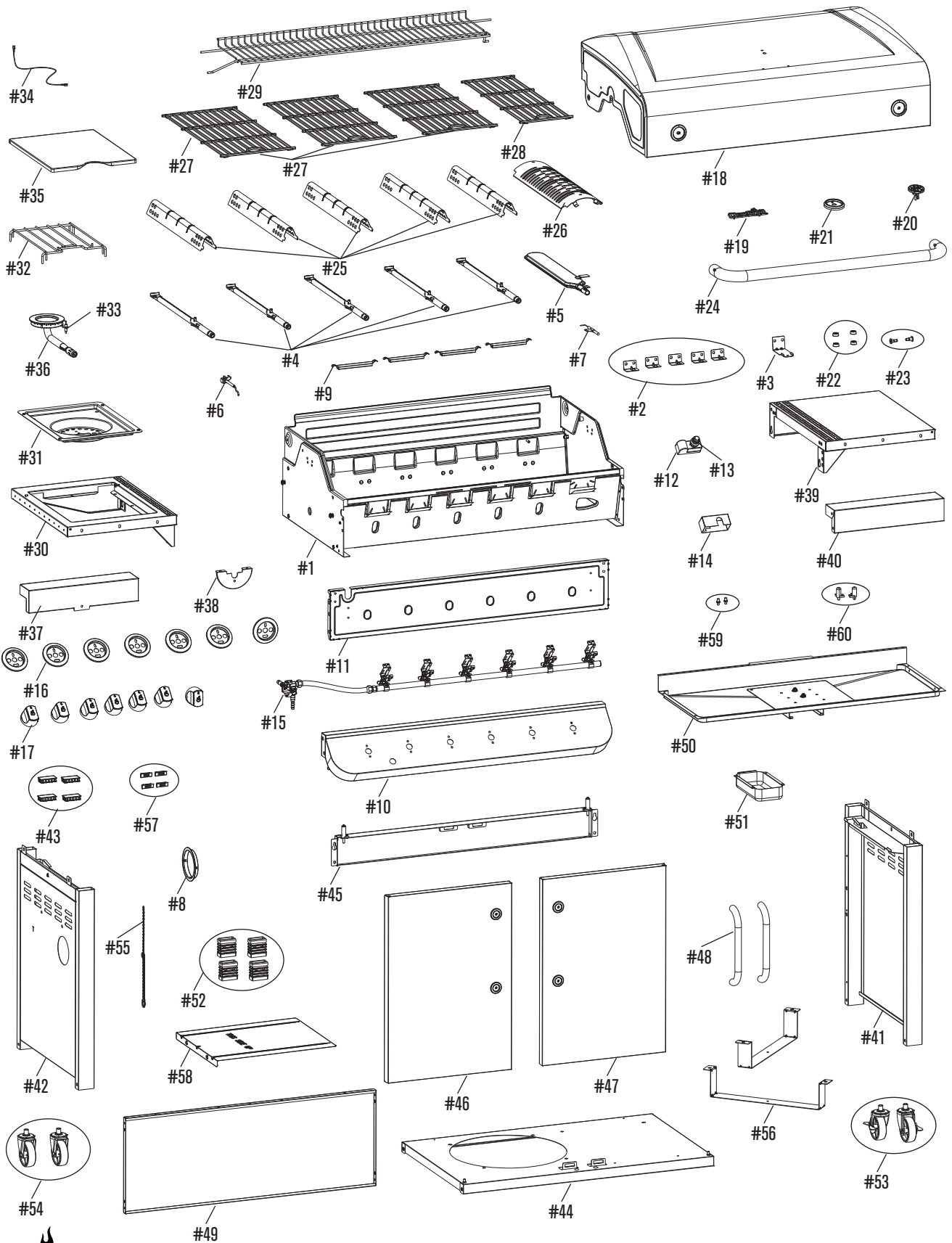


REPLACEMENT PARTS DIAGRAM



REPLACEMENT PARTS LIST

Key	Qty	Description
1	1	FIREBOX
2	5	BURNER BRACE-TUBE BURNER
3	1	BURNER BRACE-SEARING BURNER
4	5	MAIN BURNER-TUBE BURNER
5	1	MAIN BURNER-SEARING BURNER
6	1	ELECTRODE SET, F/ TUBE BURNER
7	1	ELECTRODE SET, F/ SEARING BURNER
8	1	GROMMET
9	4	CARRY OVER TUBE
10	1	CONTROL PANEL, MAIN
11	1	LOWER CONTROL PANEL
12	1	ELECTRONIC IGNITION MODULE
13	1	BUTTON, F/ IGNITION MODULE
14	1	HEAT SHIELD, F/ EI MODULE
15	1	HOSE VALVE REGULATOR ASSEMBLY
16	7	BEZEL F/ CONTROL KNOB
17	7	CONTROL KNOB
18	1	TOP LID
19	1	LOGO PLATE F/ LID
20	1	TEMPERATURE GAUGE
21	1	BEZEL, F/ TEMPERATURE GAUGE
22	4	RUBBER BUMPER, W/ HOLE, F/ TOP LID
23	1	TOP LID HARDWARE
24	1	HANDLE, F/ LID
25	5	HEAT TENT
26	1	HEAT TENT F/ SEARING BURNER
27	3	COOKING GRATE
28	1	COOKING GRATE (NARROW)
29	1	SWINGAWAY RACK
30	1	LEFT SIDE SHELF F/ HOT PLATE
31	1	DRIP PAN, F/ HOT PLATE
32	1	HOT PLATE GRATE
33	1	ELECTRODE, F/ HOT PLATE
34	1	ELECTRODE WIRE, F/ HOT PLATE
35	1	HOT PLATE LID

Key	Qty	Description
36	1	HOT PLATE
37	1	UPPER FASCIA, F/ LEFT SHELF
38	1	LOWER FASCIA F/ LEFT SHELF
39	1	RIGHT SIDE SHELF
40	1	FASCIA, F/ RIGHT SHELF
41	1	RIGHT SIDE CART PANEL
42	1	LEFT SIDE CART PANEL
43	4	LEG CAP
44	1	BOTTOM SHELF
45	1	FRONT DOOR BRACE
46	1	LEFT DOOR
47	1	RIGHT DOOR
48	2	HANDLE, F/ DOOR
49	1	BACK PANEL
50	1	GREASE TRAY
51	1	GREASE PAN
52	4	CASTER SOCKET
53	2	CASTER, LOCKING
54	2	CASTER, FIXED
55	1	MATCH HOLDER
56	2	TANK SUPPORT
57	2	MAGNET ASSEMBLY
58	1	SHIELD, F/ TANK
59	2	DOOR PIN, FIXED
60	2	DOOR PIN, SPRING
NOT Pictured		
...	1	PRODUCT GUIDE, EUROPE
...	1	HARDWARE PACK
...	1	CASTER PIN
...	1	HOT PLATE VALVE CLIP