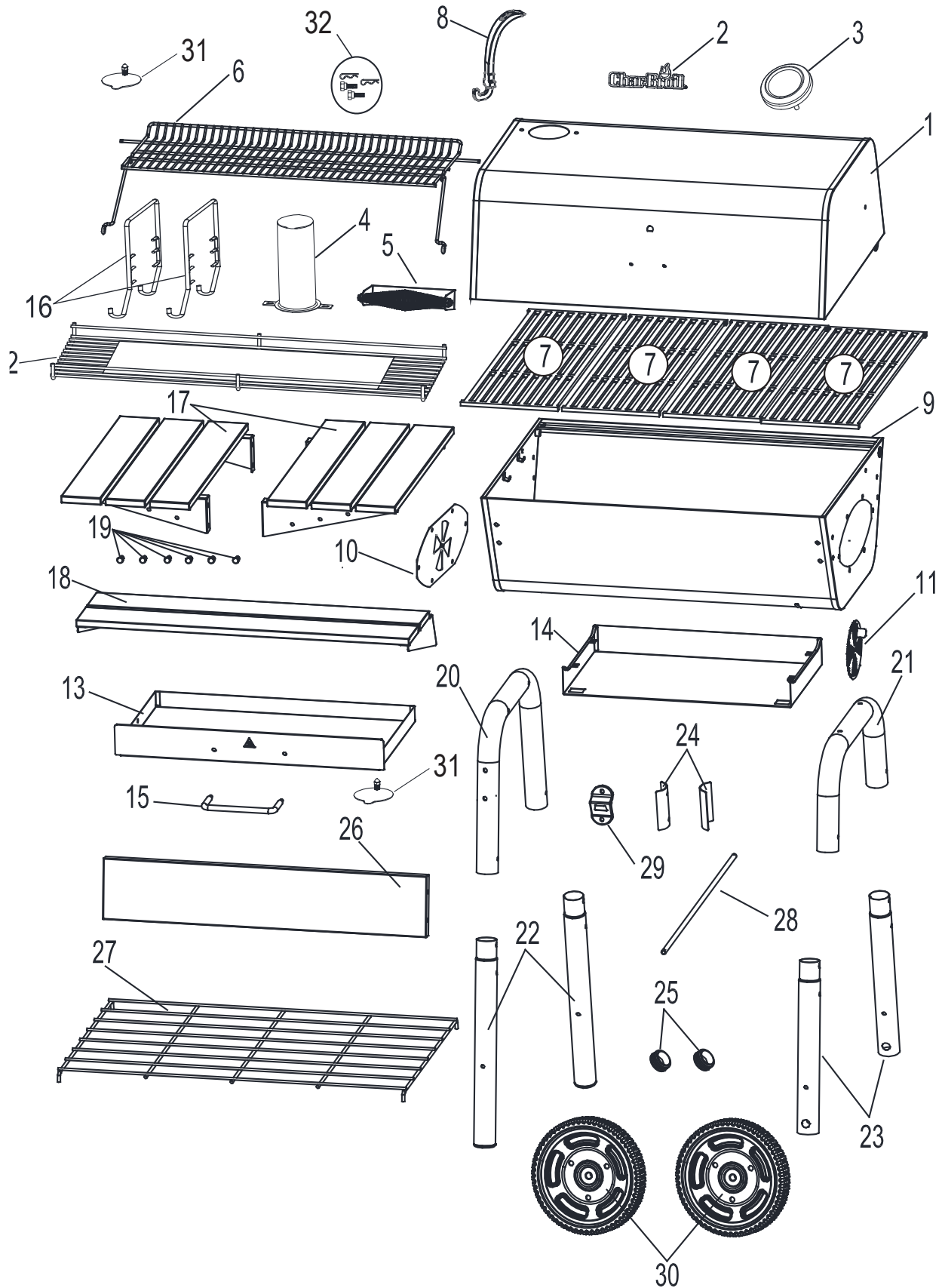


REPLACEMENT PARTS DIAGRAM

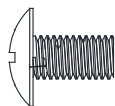
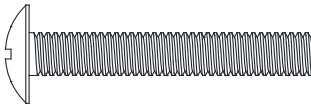



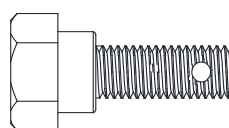

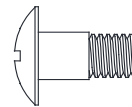



REPLACEMENT PARTS LIST

Key	Qty.	Description
1	1	TOP LID
2	1	LOGO PLATE
3	1	TEMPERATURE GAUGE
4	1	SMOKE STACK TUBE
5	1	LID HANDLE
6	1	SWINGAWAY GRID
7	4	COOKING GRATE
8	1	GRATE LIFTER
9	1	FIREBOX
10	1	SIDE PLATE, FIREBOX DAMPER
11	1	FIRE BOX DAMPER
12	1	FIRE GRATE
13	1	ASH PAN
14	1	ASH PAN SUPPORT
15	1	ASH PAN HANDLE
16	2	FIRE GRATE HANGER
17	2	SIDE SHELF

Key	Qty.	Description
18	1	FRONT SHELF
19	6	TOOL HOOK
20	1	SUPPORT LEG, LEFT
21	1	SUPPORT LEG, RIGHT
22	2	LEG, LONG W/ CAP
23	2	LEG, SHORT, F/ WHEEL
24	2	LEG TIE BRACKET
25	2	LEG CAP
26	1	REAR PANEL
27	1	BOTTOM SHELF WIRE
28	1	AXLE F/ WHEEL
29	1	BOTTLE OPENER
30	2	WHEEL
31	1	DAMPER F/ SMOKESTACK
32	1	KIT, TOP LID HARDWARE
NOT Shown		
...	1	HARDWARE PACK
...	1	PRODUCT GUIDE
...	1	KIT, SPRING, NUT F/ SMOKE-STACK

HARDWARE LIST

Key	Description	Image	Quantity
A	1/4-20×1/2" Screw		21
B	1/4-20×11/5" Screw		12
C	1/4-20 Flange Nut		30
D	1/4-20 Locking Nut		1
E	Small Retaining Pin		4
F	Hinge shaft screw		2
G	Large Retaining Pin		2
H	Shoulder Bolt		2
J	Cap Nut		2