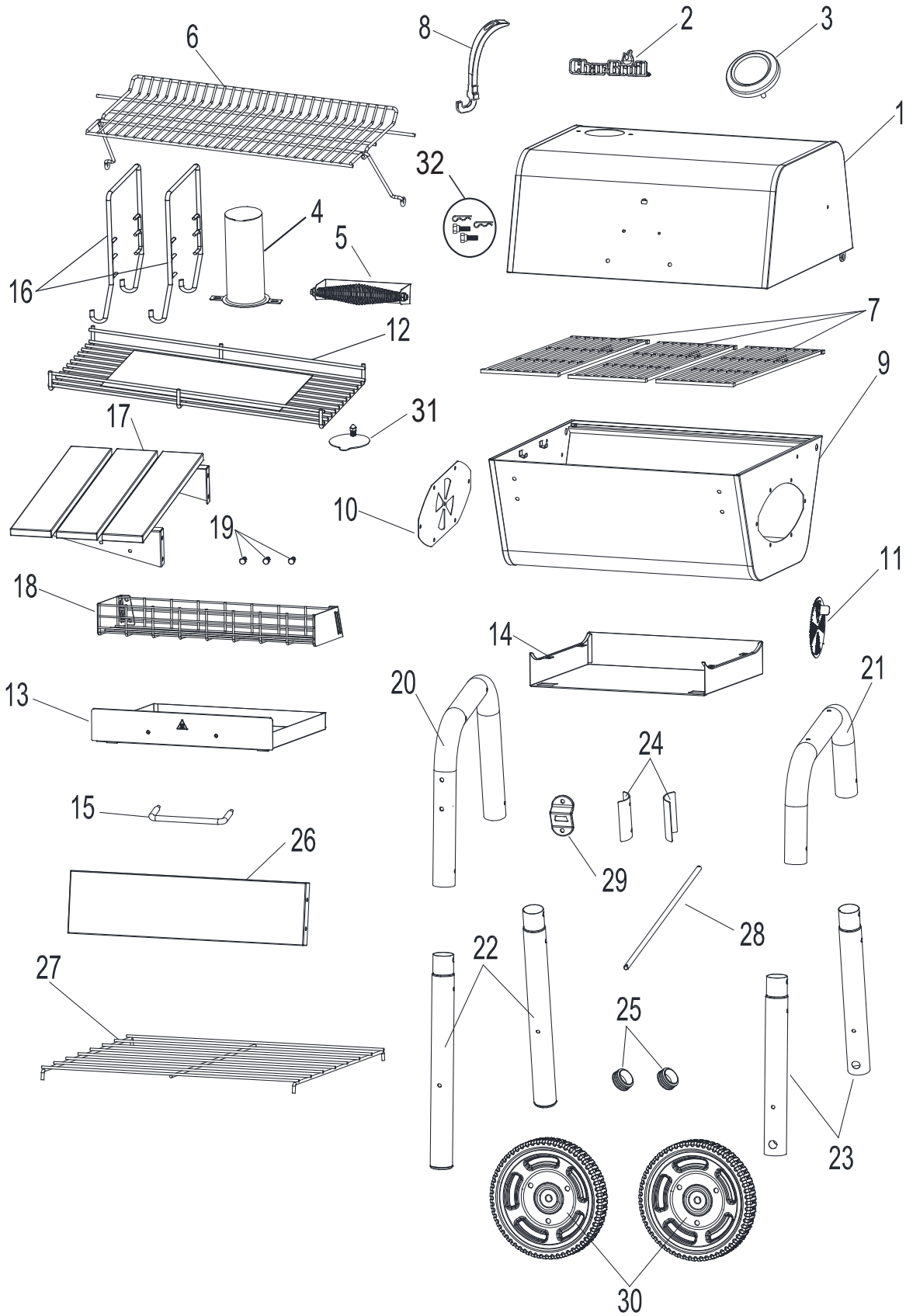


# REPLACEMENT PARTS DIAGRAM

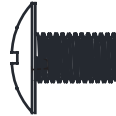




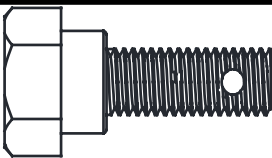

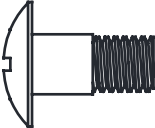



# REPLACEMENT PARTS LIST

Key	Qty	Description
1	1	TOP LID
2	1	LOGO PLATE
3	1	TEMPERATURE GAUGE
4	1	SMOKE STACK TUBE
5	1	LID HANDLE
6	1	SWINGAWAY GRID
7	3	COOKING GRATE
8	1	GRATE LIFTER
9	1	FIRE BOX
10	1	SIDE PLATE, FIREBOX DAMPER
11	1	FIRE BOX DAMPER
12	1	FIRE GRATE
13	1	ASH PAN
14	1	ASH PAN SUPPORT
15	1	ASH PAN HANDLE
16	2	FIRE GRATE HANGER
17	1	SIDE SHELF
18	1	CONDIMENT BASKET

Key	Qty	Description
19	3	TOOL HOOK
20	1	SUPPORT LEG, LEFT
21	1	SUPPORT LEG, RIGHT
22	2	LEG, LONG W/ CAP
23	2	LEG, SHORT, F/ WHEEL
24	2	LEG TIE BRACKET
25	2	LEG CAP
26	1	REAR PANEL
27	1	BOTTOM SHELF WIRE
28	1	AXLE F/ WHEEL
29	1	BOTTLE OPENER
30	2	WHEEL
31	1	DAMPER F/ SMOKESTACK
32	1	KIT, TOP LID HARDWARE
<b>NOT Pictured</b>		
...	1	HARDWARE PACK
...	1	PRODUCT GUIDE, ENGLISH, SPANISH
...	1	KIT, SPRING, NUT F/ SMOKESTACK

# HARDWARE LIST

KEY	DESCRIPTION	IMAGE	QUANTITY
A	1/4-20×1/2" Screw		17
B	1/4-20×1 1/5" Screw		12
C	1/4-20 Flange Nut		26
D	1/4-20 Locking Nut		1
E	Fine Hair pin		4
F	Hinge shaft screw		2
G	Coarse Hair pin		2
H	Shoulder Bolt		2
J	Round nut		2